

The webcast will start at 1:00 p.m. Eastern

- Visit capincrouse.com/church-guide-part-2 for these resources from today's webcast:
 - Handout
 - Recording
- To receive CPE credit, you must respond to the polling questions, which are not available on mobile devices. To receive CPE credit you must log in on a computer.
- CPE certificates will be emailed to you within the next few weeks.



The Church Financial Field Guide – Costly Mistakes to Avoid, Part 2

Stan Reiff, Partner
Dave Gunter, Partner
4.13.23



The content of this presentation, whether communicated in writing or verbally by partners, employees, or representatives of Capin Crouse LLP, is provided solely for educational purposes. This presentation is not intended to provide legal, accounting, tax, investment, or fiduciary advice. Please contact your attorney, accountant, or other professional advisor to discuss the application of this material to your particular facts and circumstances.

3

Polling Question 1

Do you want CPE credit?

- Yes
- No

4

Avoid These 7 Mistakes and Maximize Your Organization's Impact

Mistakes to Avoid:

5

Mistakes Covered in Part 1

1. Managing Budgets Like Nothing Has Changed
2. Ignoring Vulnerabilities That Lead to Fraud
3. Not Understanding Your Giving Data and Risks

6

4.

Not Reviewing Current Commitments or Adequately Preparing for New Lending Opportunities

7

Debt, Financing, and Lending Readiness

- What churches miss about lending readiness
- “We have no expansion plans, so we don’t need to prepare for lending readiness” – Wrong
- What you must require of your Chief Financial Officer
- Take a disciplined approach to your ongoing financial and stewardship/generosity efforts

8

Polling Question 2

Is your church currently pursuing any financing opportunities?

- Yes
- No
- Not right now, but we have in the past

9

5.

Not Planning and Budgeting for
Different Types of Expenses in
a Hybrid Ministry Model

10

Stewardship, Planning, and Emerging Funding Models

- Reduce the friction to launch new ministries and reach your community
- Build alignment across staff, volunteers, and financial leaders
- Recognize that a hybrid model can provide significant benefits as you work to expand your ministry's reach

11

Stewardship, Planning, and Emerging Funding Models, continued

- Understand community and the hybrid ministry model
- Analyze the impact of a new model on finances and stewardship
- Assess the risks of a hybrid ministry model
- Plan for the unknown
- Evaluate the benefits of an adaptive ministry model
- Align leadership with key hybrid ministry model stakeholders

12

6.

Assuming Your Current Financial Systems Can Support Your Growth

13

Assess the Benefits of Moving Paper-Based Finance Operations to Digital

- With the proper controls and segregation of duties in place, digitization is great stewardship of the church's resources
- Ensure your church has the most effective general ledger accounting software at the appropriate price point for your budget, size, and complexity
- Consider engaging a professional to help

14

Polling Question 3

When was the last time you assessed your financial systems?

- In the past 6 months
- In the past year
- In the past 2 – 5 years
- Never

15

A blue square icon with rounded corners containing the white number '7' followed by a period.

Not Optimizing Your
Financial Operations Team

16

Who Is Responsible for Finances and Results?

- Executive/Admin Pastor and CFO/Controller as financial managers
- Finance Committee as financial experts and reviewers
- All of the above as reviewers and planners for funding via:
 - Annual budget process
 - Capital campaigns
 - Special projects

17

Financial Operations Evaluation

- Optimize your financial operations team
- Make sure you have the right talent pool
- Empower your finance and generosity teams
- Evaluate and balance

18

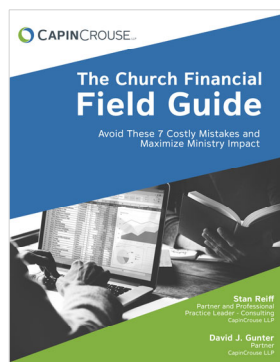
Polling Question 4

What is your top-priority adjustment for your finance operations team?

- Hire at least one new member
- Provide training to existing staff
- Reallocate tasks and responsibilities among existing staff
- No changes needed

19

New E-book: The Church Financial Field Guide



Download your free copy! Scan this QR code or visit capincrouse.com/church-guide

20

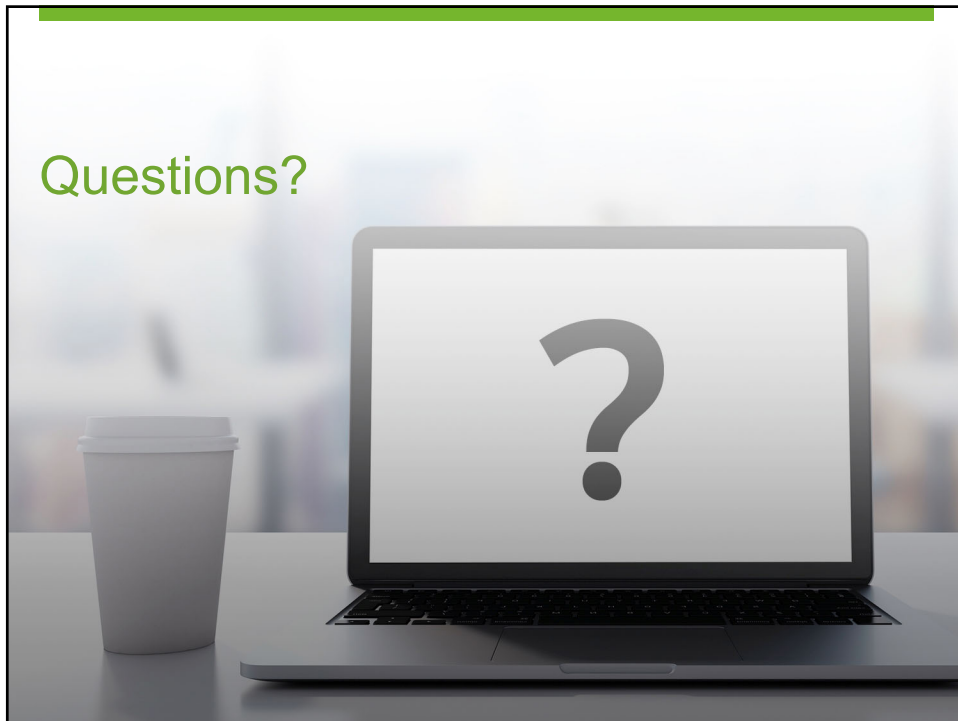
Watch Part 1




If you missed Part 1 of this webcast series, scan the QR code or visit capincrouse.com/church-guide-part-1 to watch the recorded webcast on demand.

21

Questions?





Thank you.

Stan Reiff, Partner
Professional Practice Leader –
Consulting

✉ sreiff@capincrouse.com

📱 505.50.CAPIN ext. 1306

Dave Gunter
Partner

✉ dgunter@capincrouse.com

📱 505.50.CAPIN ext. 2060



© Copyright CapinCrouse 2023